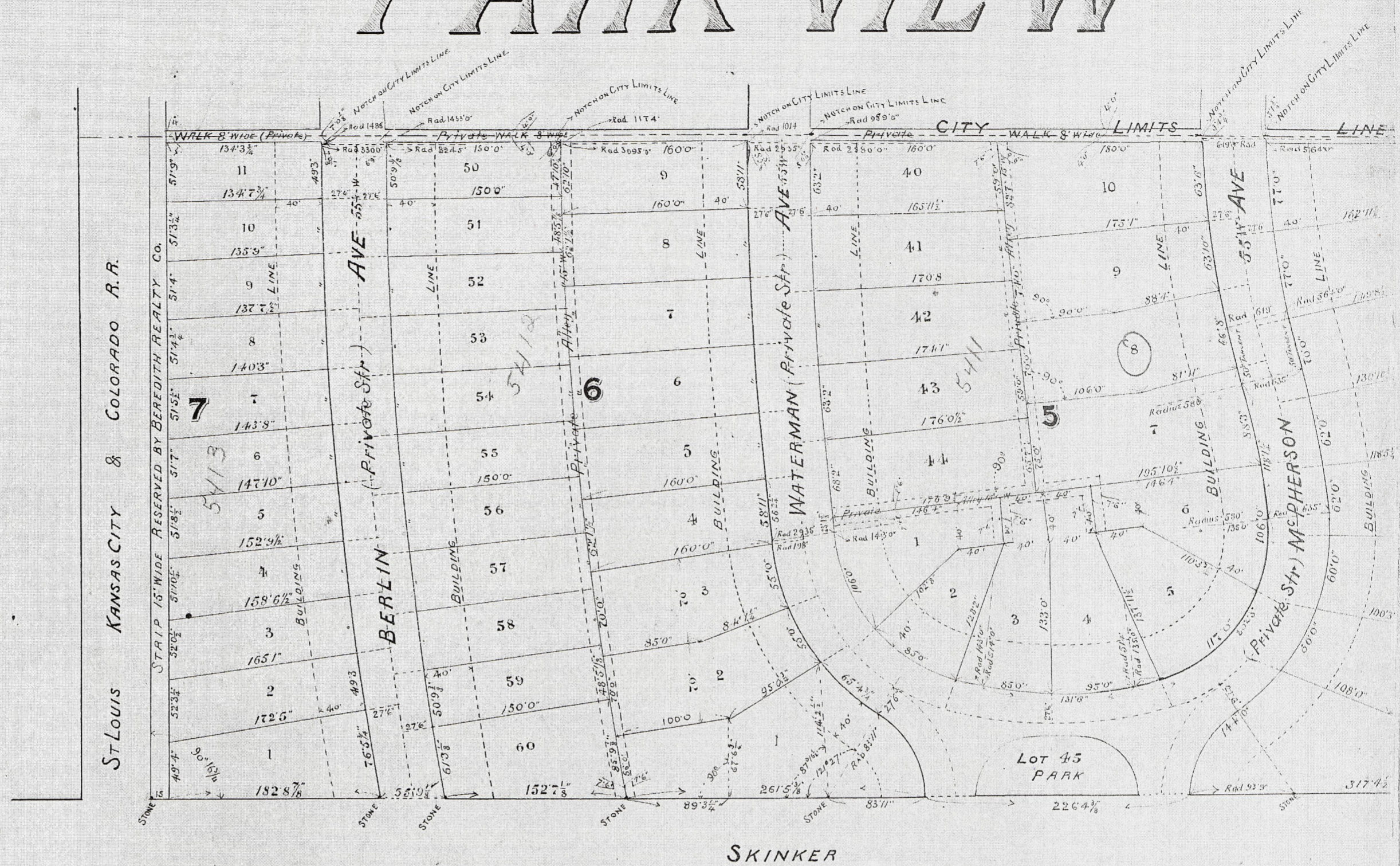


PARK VIEW



Office of City Surveyor, St. Louis Mo.
 THIS IS TO CERTIFY that by order of the BEREDITH REALTY COMPANY I have, during the month of October, 1905, made a survey of a Tract of Land in T.S. Survey 378, bounded on the North by DELMAR AVENUE, on the East by SKINKER ROAD, on the South by ST. LOUIS, KANSAS CITY and COLORADO, R. R. and on the West by the Western Limits of the City of St. Louis, and have subdivided said Tract of Land into Blocks and Lots in the manner as shown on the above PLAT.

In WITNESS WHEREOF, I have hereto set my hand and affixed my Official Seal this the 9th day of November, 1905
 Survey executed by C.O. Fischer, Deputy

Julius Pitzman
 City Surveyor, St. Louis Mo.

Julius Pitzman
 City Surveyor
 St. Louis Missouri

(Original)
 Approved by the Board of Public Improvements
 Nov. 17, 1905

Attest
 H.R. Farnum
 Secretary, Pro. Tem.

Office President Board Public Imps
 NOV. 17, 1905
 ST. LOUIS

FILED AND RECORDED
 NOV 21 1905
 11:20 o'clock A.M.
 Paul Young, Jr.
 Recorder.
 D. N. 29