

AMENDED PLAT

OF THE SOUTH PART OF BLOCK 8 OF

PARKVIEW

\$800

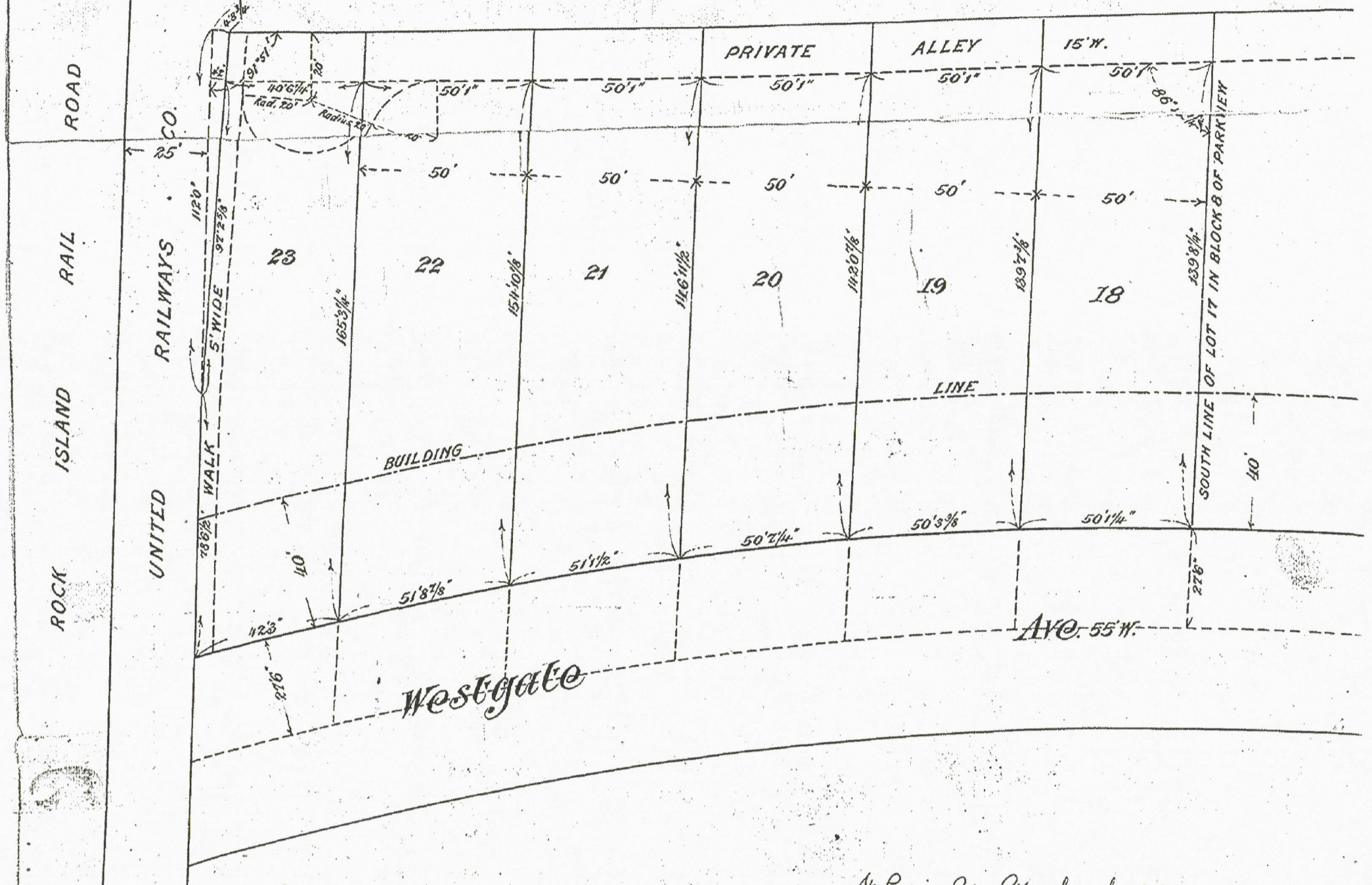
#10 69.

BK 10P 69
6-11-12
#4.

4-93

915 A.

UNITED RAILWAYS CO.



This is to certify that I, Julius Pitman, City Surveyor of St. Louis, have made as survey of the tract of land composed of Lots 18-19-20-21-22 and 23 of Block 8 of Parkview and that I have re-subdivided said land into six lots, as shown and represented on the above plat, but that each of the said lots contains a larger number of square feet than the smallest lot as shown on the plat of Parkview.

In Witness Whereof I have hereunto set my hand and affixed my seal of office, this 11th day and year first above written.

Julius Pitman
City Surveyor of St. Louis.

The Beredich Realty Company, a corporation of the State of Missouri, owner of a tract of land composed of Lots 18-19-20-21-22 and 23 of Block 8 of Parkview (a subdivision situated in the County of St. Louis, a plat of which is recorded in Plat Book 6 page 22) has caused said tract of land to be re-subdivided in the manner as shown on the above plat, entitled "Amended Plat of the south part of Block 8 of Parkview", and which said re-subdivision is made under authority of Clause 3 of an Indenture, made and entered into the 25th day of November 1905, between the Beredich Realty Company and John C. Roberts, Adrian O. Rube and Henry S. Caulfield and to which Indenture reference is hereby had.

In Witness Whereof the Beredich Realty Company has caused three presents to be signed by its President, countersigned by its Secretary, this the 20th day of March, 1912.

Attest:
J. W. Rucker
Secretary

Beredich Realty Company
by Geo. W. Rucker
President

State of Missouri } ss.
City of St. Louis }

On this 20th day of March, 1912, before me appeared George W. Rucker, to me personally known, who, truly by oath sworn, did say that he is the President of the Beredich Realty Company, and that the seal affixed to the above instrument is the corporate seal of said corporation, and that the said instrument was signed and sealed in behalf of said corporation, by authority of its Board of Directors, and said George W. Rucker acknowledged said instrument to be the free act and deed of said corporation.

In Testimony Whereof I have hereunto set my hand and affixed my Notarial Seal at my office in the City of St. Louis, this day and year last above written.

J. W. Rucker
Notary Public, St. Louis, Mo.

My Commission expires July 15, 1913.

St. Louis, Mo. March 20, 1912.
We, the undersigned Trustees, acting under authority of an indenture, dated November 25, 1905, made by and between the Beredich Realty Company and John C. Roberts, Adrian O. Rube and Henry S. Caulfield, hereby consent to the re-subdivision as shown on the above plat and we hereby fix the frontages of the above lots for assessment purposes as follows: Lots 18-19-20-21 and 22, fifty feet each, and Lot 23 for thirty-three feet.

In Witness Whereof we have hereunto set our hands and seals, this the 20th day of March, 1912.

Fred Weerling }
John W. Rucker } Trustees
Chas. P. Williams }

I, Harry W. Castler, City Clerk of the City of University City, hereby certify that the foregoing amended plat of the South part of Block 8 of Parkview Subdivision was approved by the Board of Aldermen by ordinance 878 approved the 11th day of June 1912. In Witness Whereof I have hereunto set my hand and affixed the official seal of the City of University City, this eight day of June 1912.

Harry W. Castler
City Clerk of University City

June 10, 1915
10 9115 A.
69

Henry Steinmann