

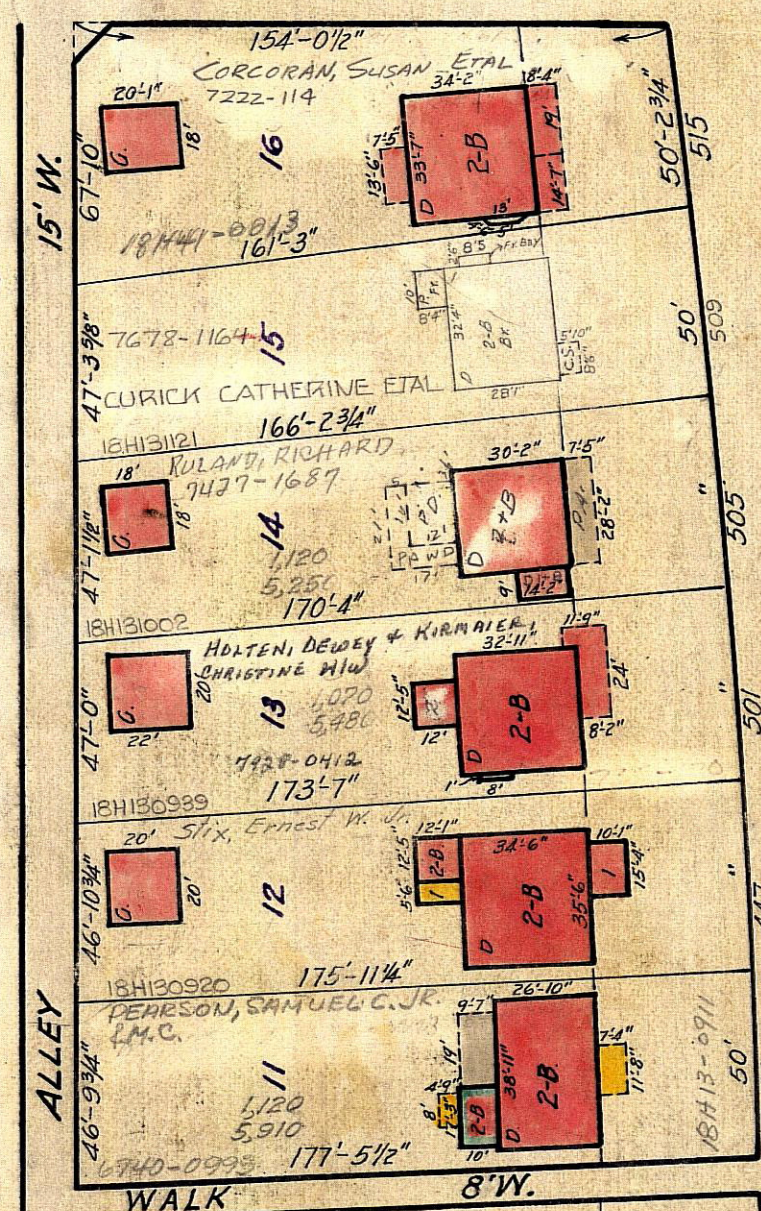
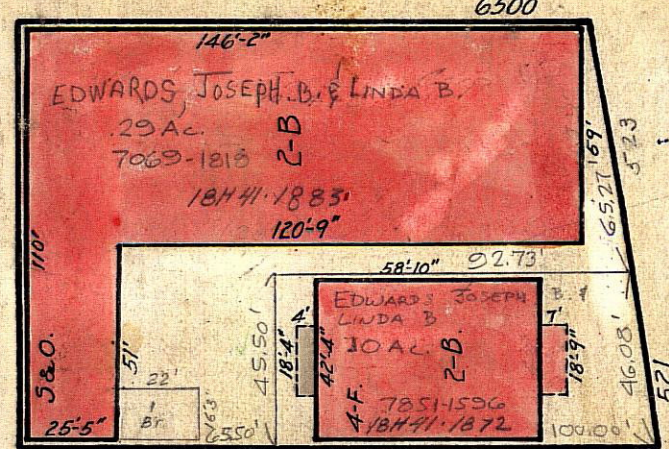
ROSEDALE 57 HEIGHTS

AVE.

(30'W)

MELVILLE

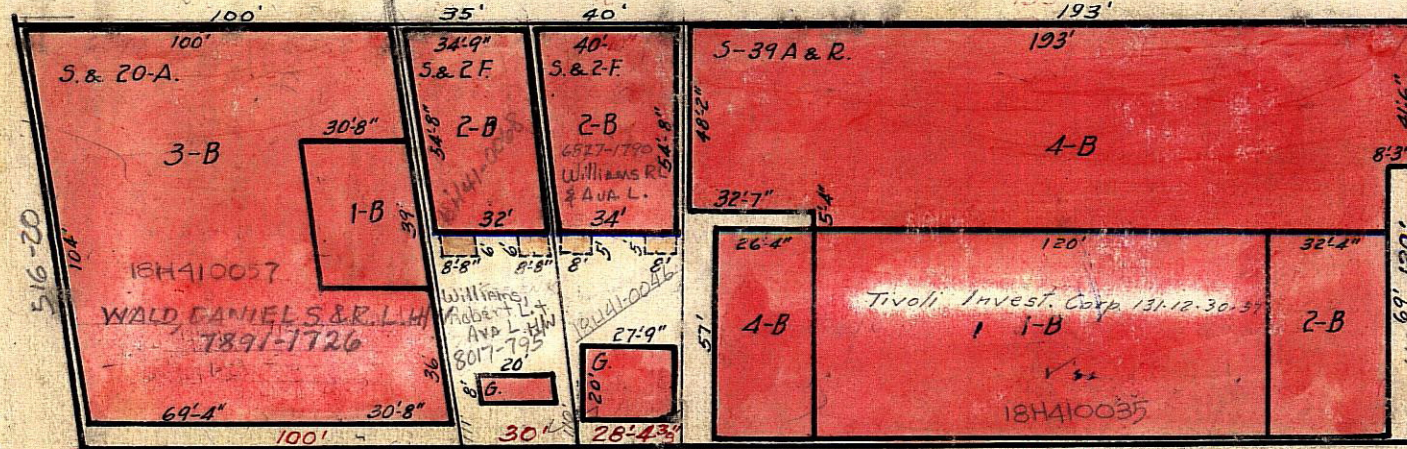
former St. Louis Public Service R.O.W. (30'w.)



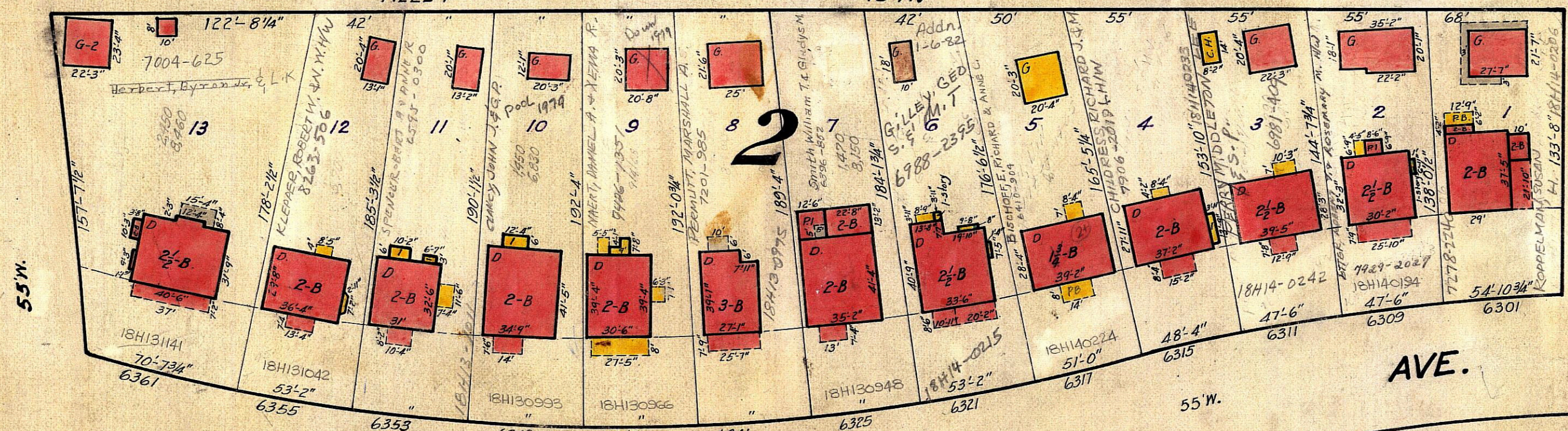
BLK. 9 (62)

DELMAR NORTH PARKVIEW 60'W.

AVE.

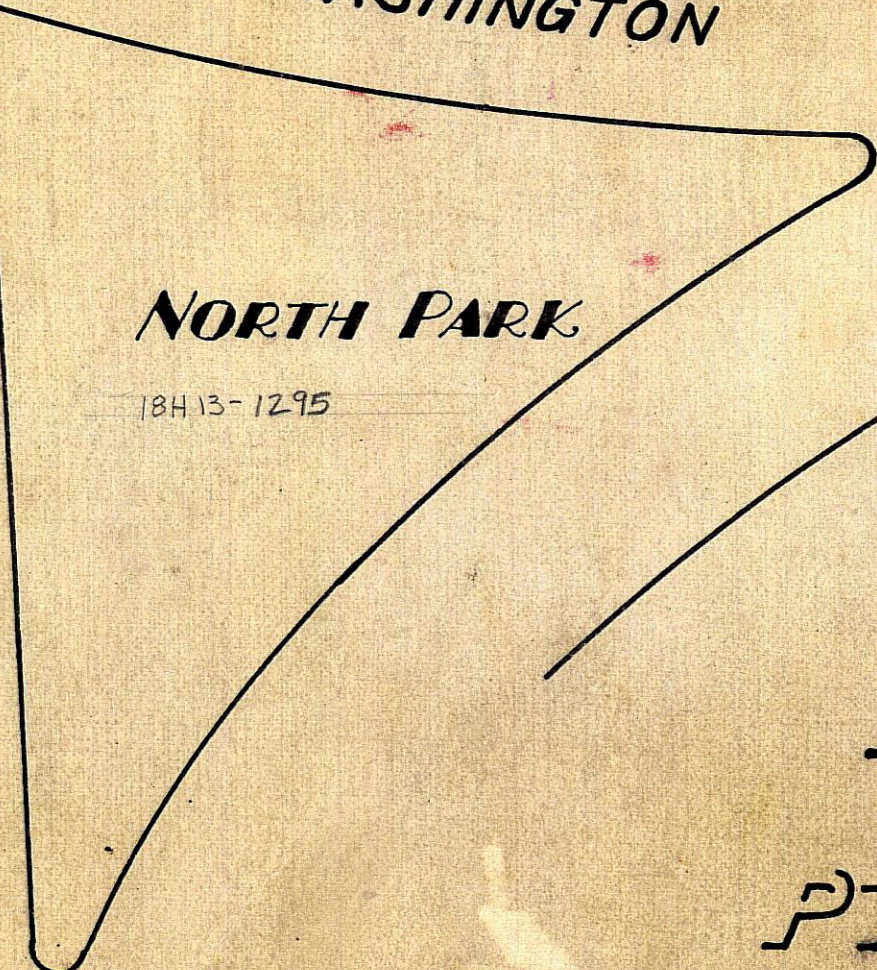


ALLEY



WESTGATE

WASHINGTON



BLK. 3 (62) BLOCKS 2 & 9 OF PARKVIEW SUB. AND PT. U.S. SURVEY 373

BLVD.

(50)

UNIVERSITY CITY 6300

AVE. LIMITS

50'W.

LIMITS CITY

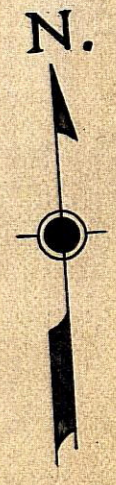
UNIVERSITY CITY

(61)

LOUIS

ST.

OF



SCALE: 1"=50'