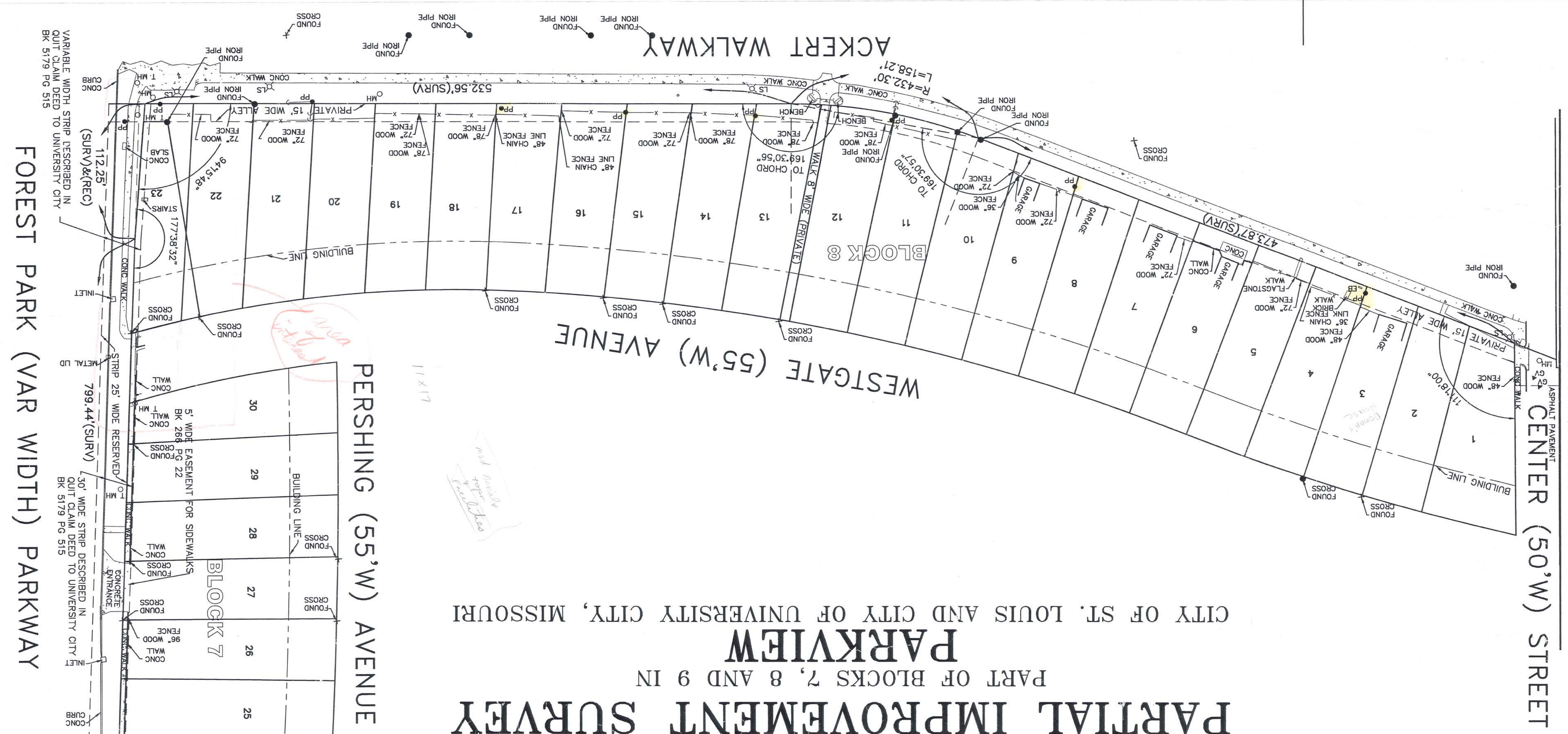
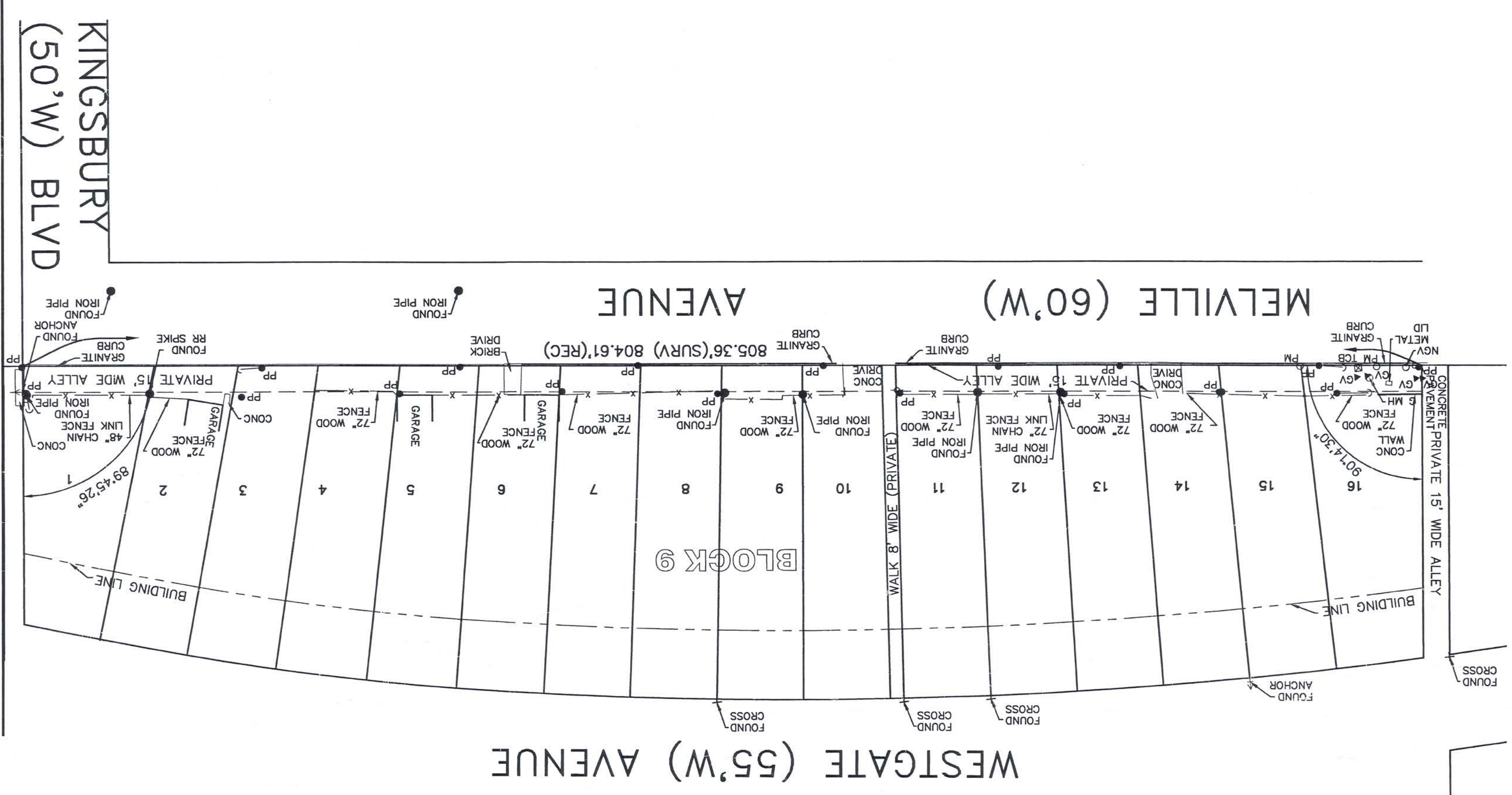
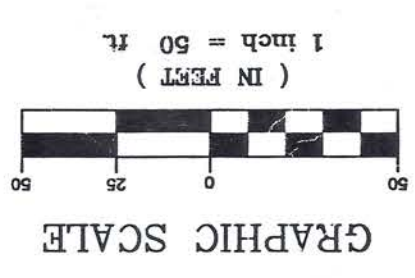


- SYMBOLS & ABBREVIATIONS**
- ▲ GV GAS VALVE
 - NGV NATURAL GAS VENT
 - PM PARKING METER
 - EM ELECTRIC BOX
 - LS LIGHT STANDARD
 - TS TRAFFIC SIGNAL
 - MH MANHOLE
 - G MH GAS MANHOLE
 - T MH TELEPHONE MANHOLE
 - (SURV) SURVEY
 - (REC) RECORD
 - (VAR) VARIABLE
 - BK BOOK
 - PG PAGE
 - ▲ GY GAS VALVE
 - N NORTH
 - S SOUTH
 - E EAST
 - W WEST
 - CONC CONCRETE
 - MHC MANHOLE
 - G MH GAS MANHOLE
 - T MH TELEPHONE MANHOLE
 - (SURV) SURVEY
 - (REC) RECORD
 - (VAR) VARIABLE
 - BK BOOK
 - PG PAGE



PROPERTY BOUNDARY AND PARTIAL IMPROVEMENT SURVEY PARKVIEW
 PART OF BLOCKS 7, 8 AND 9 IN CITY OF ST. LOUIS AND CITY OF UNIVERSITY CITY, MISSOURI



DATE: 4/28/03
 BOOK NO.: N/A
 DRAFTED BY: J.J.H.
 APPROVED BY: W.F.M.
 FILE NAME: 03016.DWG
 SHEET TITLE: PARTIAL IMPROVEMENT SURVEY
 SHEET NUMBER: **SUV-1**
 SHEET NO: 2 OF 2
 PROJECT NO: 03016

PROPERTY BOUNDARY AND PARTIAL IMPROVEMENT SURVEY
 PART OF BLOCKS 7, 8 AND 9 IN **PARKVIEW**
 CITY OF ST. LOUIS AND CITY OF UNIVERSITY CITY, MISSOURI

NO.	DATE	DESCRIPTION
1	5/18/03	CERTIFICATION

PROJECT REVISION:

7251 Concordat Ave., Suite 704
 St. Louis, MO 63105
 314-862-5577, 314-862-5579 FAX

Massmann SURVEYING